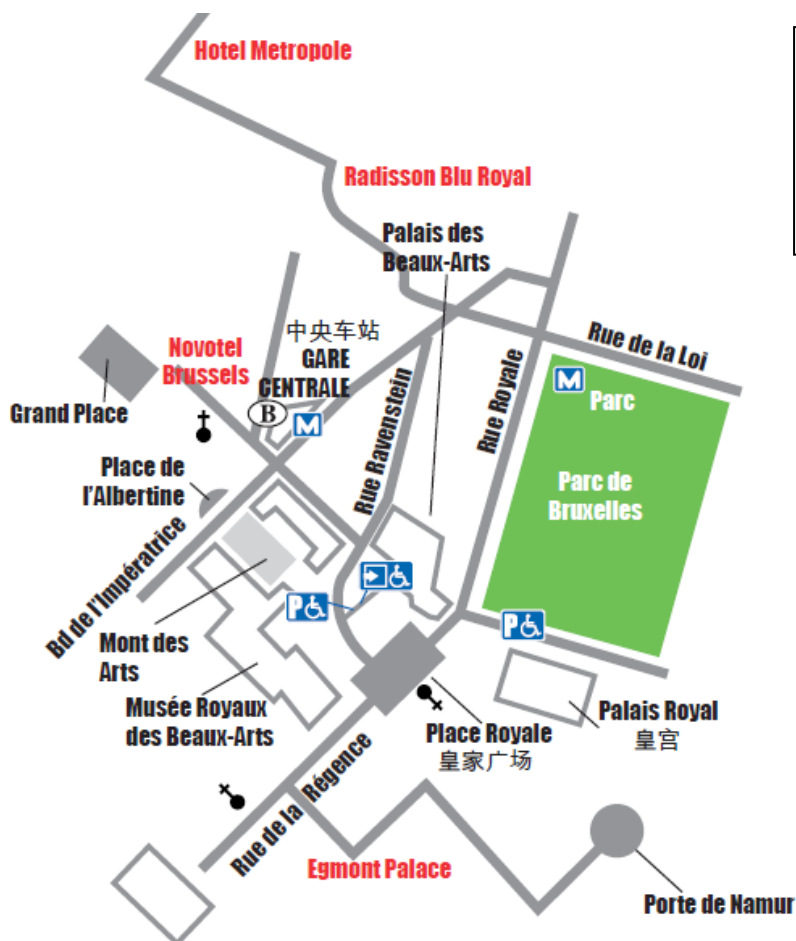


Egmont Palace

HOW TO GET THERE?



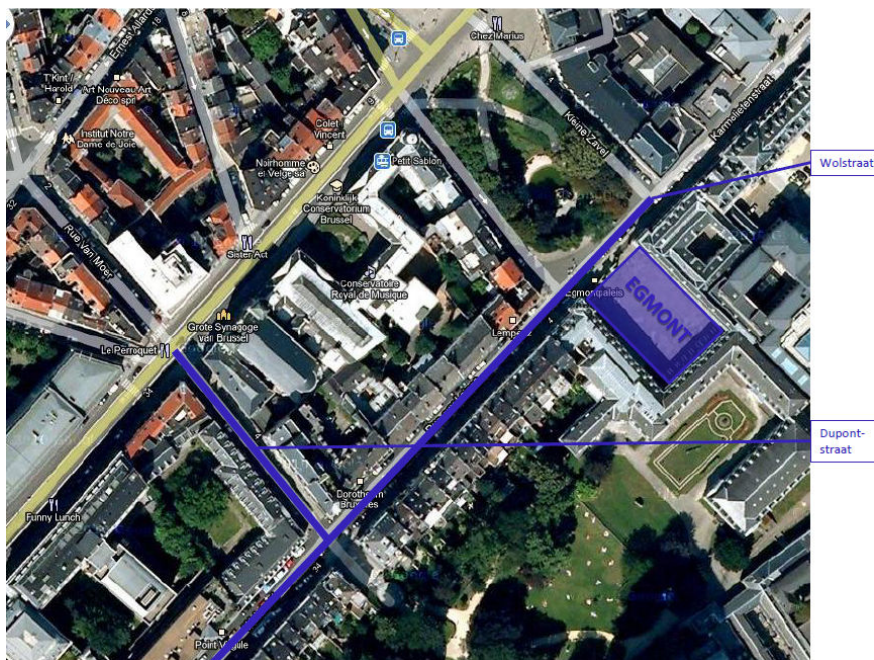
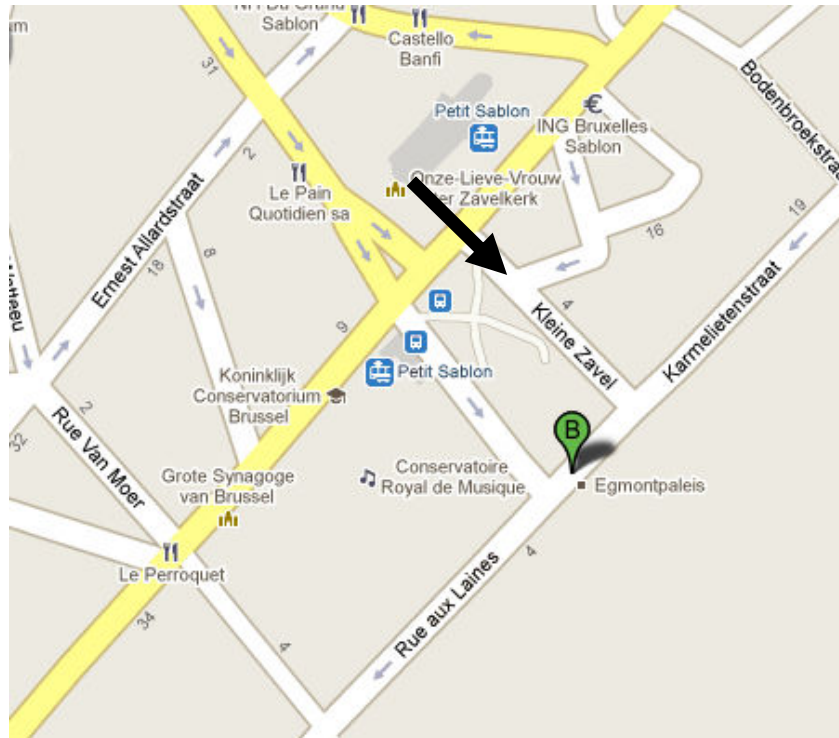
Address:

Egmont Palace
Kleine Zavel 8bis
1000 Brussels

By Car

For participants who will come by car, we have dedicated parking slots near the entrance of the Egmont Palace at Kleine Zavel 8bis. Your car can enter Petit Sablon via Rue de la Régence. A parking arrangement will be provided Rue aux laines (Wolstraat) and Rue Dupont (Dupontstraat).

- Botanique: rue Royale – rue des Colonies – Marché au Bois – rue Ravenstein – Place Royal – Rue de la Régence – Petit Sablon
- Arts/Loi: rue de la Loi – rue des Colonies – Marché au Bois – rue Ravenstein – Place Royal – Rue de la Régence – Petit Sablon
- Louise: rue de la Régence – Petit Sablon



Via Taxi

There are two major taxi companies providing their services in Brussels.

- Taxis bleus: +32 (0)2 268 00 00
- Taxis verts: +32 (0)2 349 49 49

Via Metro

Line 2: you take the stop "Naamse Poort "

Via Tram

Trams 92, 93 and 94 stop at the Regentschapstraat next to the church Onze Lieve Vrouw ten Zavel and nearby the Koningsplein.

Via Bus

Busses 34, 54, 71 and 80 have a stop at the "Naamse Poort"

Busses 27, 95 en 96 stop at the Regentschapstraat close to the above mentioned bus stops.

Via Train

If you leave the Central Station you can walk to the Egmontpaleis via the Kunstberg, the Koningsplein and the Naamsestraat.